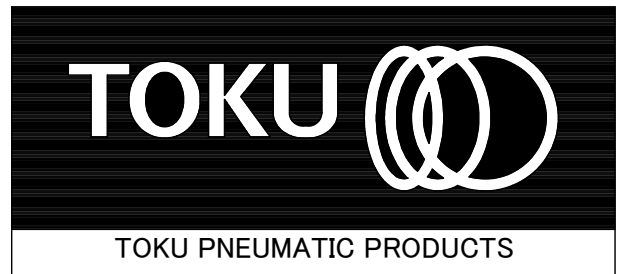


MAINTENANCE INSTRUCTIONS

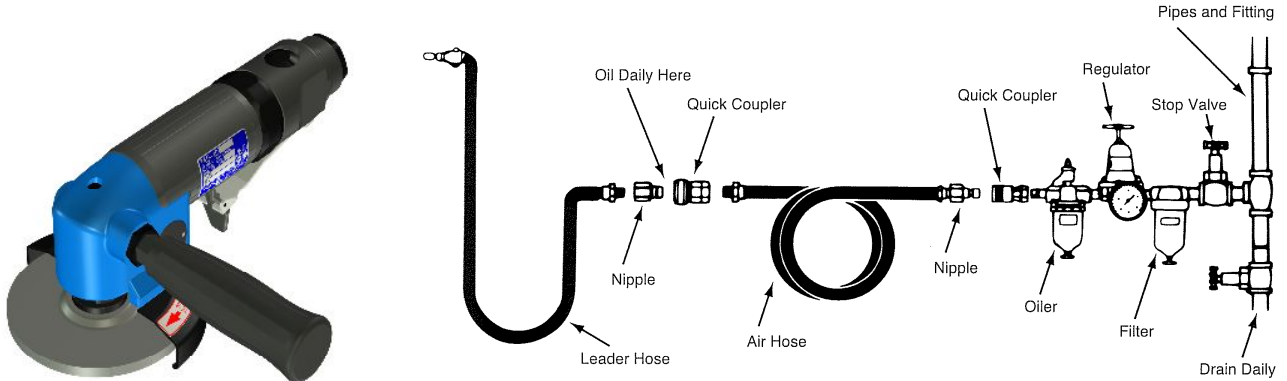
AIR ANGLE GRINDER

MODEL TAG- 40FLH 40FRH



www.air-allied.com.au

AIR HOSE AND HOSE CONNECTION :



OPERATING INSTRUCTIONS

"WARNING"

1. ALWAYS USE APPROVAED EYE PROTECTION WHEN OPERATING THIS TOOL.
2. ALWAYS DIRECT EXHAUST AWAY FROM YOURSELF AND OTHERS IN THE TOOL.
3. DAILY-BEFORE USING TOOL, WITH NO WHEEL, CHECK SPINDLE SPEED. NEVER OPERATE FASTER THAN RATED SPEED.
4. ALWAYS USE ACCESSORIES IN GOOD CONDITION RATED AT OR ABOVE SPINDLE SPEED. TIGHTEN SPINDLE ATTACHMENTS SECURELY.
5. ALWAYS USE APPROVED DUST MASK.
6. ALWAYS DISCONNECT TOOL WHEN NOT IN USE.

LUBRICATION

To flush out gum and dirt :

1. Daily before and after each shift, pour a liberal quantity of gum solvent oil into air line.
2. Connect tool to air line. Operate tool.
3. Repeat procedure before storing.
4. Monthly, check oil in impact unit. This tool holds approximately 1/3 oz. of SAE #30 oil.

AIR SUPPLY (minimum requirements)

1. Compressor/5hp, 20CFM at 90 psig (0.6MPa), 40 gal air tank.
2. (See diagram above for Pipe, Hose and Fitting size.)
3. When using two or more hoses, all except leader hose should be 1/2" I.D. or larger.

FOR BEST OPERATION : Supply tool with 90psig(0.6MPa) of clean, dry air. Higher pressure drastically reduces tool life and can void warranty.

LOSS OF POWER/ERRATIC ACTION (possible causes)

1. Reduced compressor output.
2. Excessive drain on air line.
3. Moisture or restricted pipe, hose or fittings.
4. Improper size or poor condition of pipe, hose or fittings.
5. Dirt or gum deposits cut tool power. To correct this, check and clean air strainer, then repeat lubrication procedure. (If outside conditions are in order, disassemble tool, replace worn or damaged parts, clean, assemble and lubricate.)

REPLACEMENT PARTS

Always use GENUINE TOKU TOOLS Replacement Parts.

When replacement parts are required, order Part No. and Description in the Parts List.

SOUND LEVEL

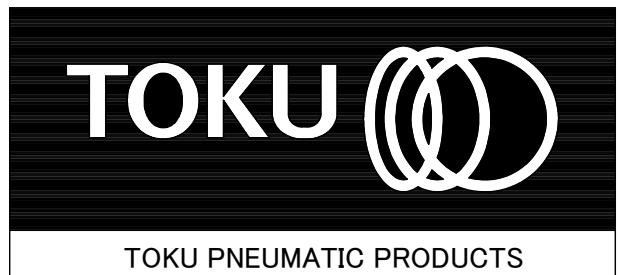
Sound Level dB(A) in accordance with ISO15744 : Pressure 91.6
Power 102.6

SPECIFICATION

| Type No. | Wheel Size | | Max Free Speed | Height | | Net Weight | | Overall Length | | Air Consumption | | Hose Size | |
|-----------|------------|--|----------------|--------|----------------------------------|------------|------|----------------|----------------------------------|-----------------------|-------|-----------|------|
| | (mm) | (in) | (r.p.m) | (mm) | (in) | (kg) | (lb) | (mm) | (in) | (m ³ /min) | (cfm) | (mm) | (in) |
| TAG-40FLH | 100X6X15.9 | 4X ¹ / ₄ X ⁵ / ₈ | 12,000 | 90 | 3- ¹⁹ / ₃₂ | 1.6 | 3.5 | 213.5 | 8- ¹³ / ₃₂ | 1 | 35 | 9.5 | 3/8 |
| TAG-40FRH | | | | | | 1.8 | 4.0 | 217.5 | 8- ⁹ / ₁₆ | | | | |

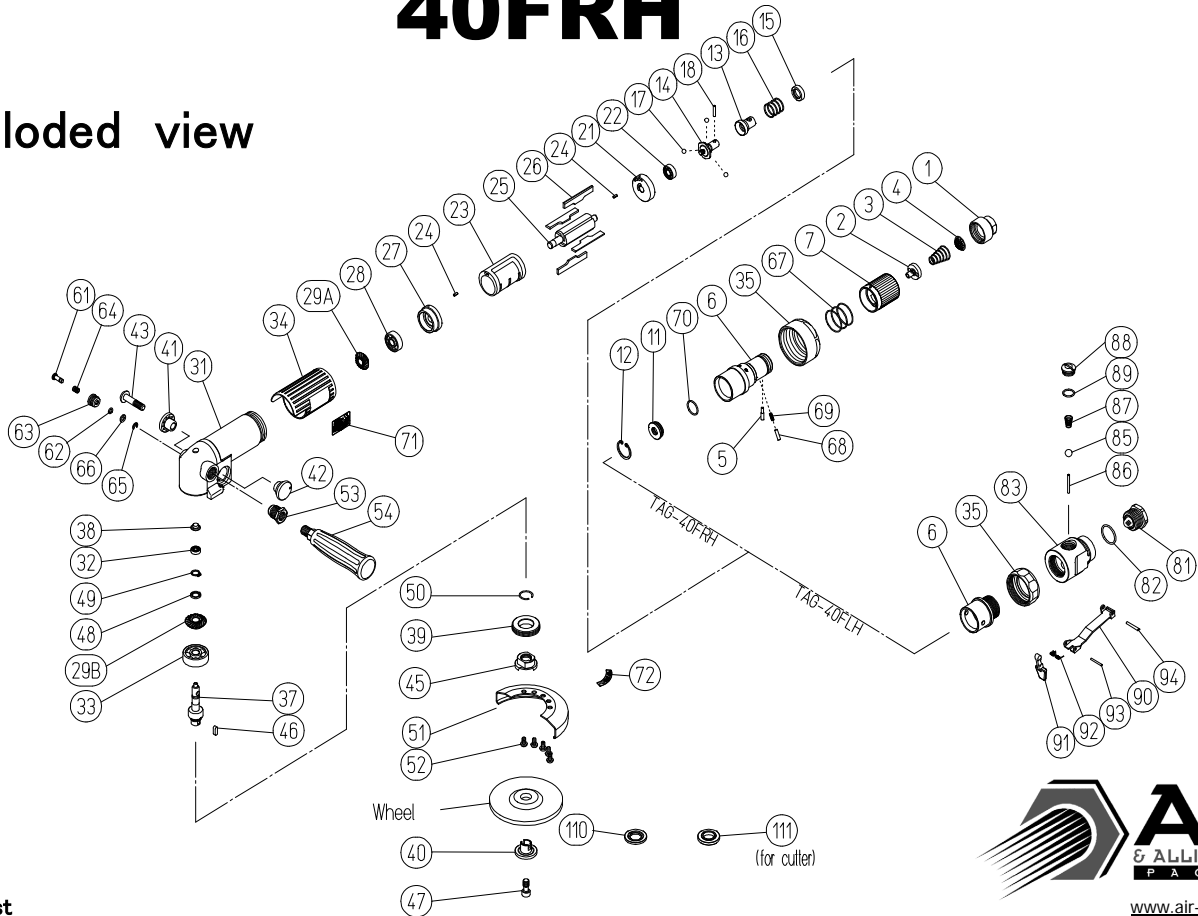
MAINTENANCE INSTRUCTIONS

AIR ANGLE GRINDER



MODEL **TAG- 40FLH**
40FRH

Exploded view



www.air-allied.com.au

Parts List

| Symbol No. | Parts No. | Q'ty Req. | | Description | Symbol No. | Parts No. | Q'ty Req. | | Description |
|------------|-----------|-----------|-------|-------------------------------|-------------|-----------|-----------|-------|--------------------------------------|
| | | 40FLH | 40FRH | | | | 40FLH | 40FRH | |
| 001 | 420576B80 | — | 1 | Throttle Valve Cover | 046 | 130410200 | 1 | 1 | Parallel Key 4X4X12 |
| 002 | 420576B0B | — | 1 | Throttle Valve | 047 | 131708020 | 1 | 1 | Hex.Socket Head Cap Screw M8X20 |
| 003 | 130802117 | — | 1 | Throttle Valve Spring | 048 | 420576550 | 1 | 1 | Washer |
| 004 | 136802010 | — | 1 | Net Screen | 049 | 130302010 | 1 | 1 | Retaining Ring C-Type S-10 |
| 005 | 130402108 | — | 1 | Valve Pin 3X3.7X18 | 050 | 130802350 | 1 | 1 | Stopper |
| 006 | 420571A10 | 1 | — | Case Cap | 051 | 420576U00 | 1 | 1 | Wheel Cover |
| | 420574A11 | — | 1 | Case Cap | 052 | 132405010 | 5 | 5 | Cross Recessed Head Screw M5X10 |
| 007 | 420574B31 | — | 1 | Throttle Valve Handle | 053 | 420406A20 | 1 | 1 | Case Bushing |
| 011 | 420574M20 | — | 1 | Governor Ring | 054 | 420417N20 | 1 | 1 | Dead Handle |
| 012 | 130301024 | — | 1 | Retaining Ring C-Type H-24 | 061 | 420576360 | 1 | 1 | Stopper Pin |
| 013 | 420576L60 | 1 | 1 | Governor Valve | 062 | 131103003 | 1 | 1 | O-Ring S-5 |
| 014 | 420576M00 | 1 | 1 | Governor Body | 063 | 420576370 | 1 | 1 | Stopper Pin Cage |
| 015 | 420576L30 | 1 | 1 | Pin Stopper | 064 | 130802206 | 1 | 1 | Stopper Pin Spring 6X7(0.5) |
| 016 | 130802352 | 1 | 1 | Spring 18X14.5X1.2 | 065 | 130303004 | 1 | 1 | Retaining Ring E-Type E-4 |
| 017 | 130502014 | 3 | 3 | Steel Ball 7/32(5.56mm) | 066 | 131309005 | 1 | 1 | Washer M5 |
| 018 | 130400301 | 1 | 1 | Needle Roller 3X15.8 F | 067 | 130802354 | — | 1 | Spring 28.4X21X1.2 |
| 021 | 420576C80 | 1 | 1 | Rear Plate | 068 | 130402103 | — | 1 | Plunger Pin 3.8X14 |
| 022 | 130103098 | 1 | 1 | Ball Bearing 698ZZ | 069 | 130802122 | — | 1 | Plunger Spring |
| 023 | 420576D50 | 1 | 1 | Cylinder | 070 | 131103015 | — | 1 | O-Ring S-18 |
| 024 | 130602106 | 2 | 2 | Spring Pin 2.5X6 | 071 | 137302071 | 1 | 1 | Name Plate N |
| 025 | 420576E00 | 1 | 1 | Rotor | 072 | 137302070 | 1 | 1 | Wheel Cover Name Plate N |
| 026 | 137101031 | 4 | 4 | Vane | 081 | 420571N5B | 1 | — | Air Inlet PT CP |
| 027 | 420576E80 | 1 | 1 | Front Plate | 082 | 131103019 | 1 | — | O-Ring S-24 |
| 028 | 130103029 | 1 | 1 | Ball Bearing 629ZZ | 083 | 420571C00 | 1 | — | Valve Body |
| 029 | 420576M5C | 1 | 1 | Gear Kit | 085 | 130505028 | 1 | — | Rubber Ball 7/16 |
| 029A | — | 1 | 1 | Pinion Gear | 086 | 130400302 | 1 | — | Needle Roller 3X27.8 A |
| 029B | — | 1 | 1 | Bevel Gear | 087 | 130802202 | 1 | — | Valve Spring |
| 031 | 420571A00 | 1 | 1 | Case | 088 | 420420B40 | 1 | — | Valve Cap |
| 032 | 130103095 | 1 | 1 | Ball Bearing 695ZZ | 089 | 131103012 | 1 | — | O-Ring S-14 |
| 033 | 130112001 | 1 | 1 | Ball Bearing 6300ZZ | 090 | 420591B50 | 1 | — | Lever |
| 034 | 136602014 | 1 | 1 | Grip Rubber | 091 | 420591B60 | 1 | — | Stopper |
| 035 | 420571A50 | 1 | — | Case Nut | 092 | 130810004 | 1 | — | Coil Spring |
| | 420576A50 | — | 1 | Case Nut | 093 | 130602020 | 1 | — | Spring Pin 2X20 |
| 037 | 420577M41 | 1 | 1 | Bevel Gear Shaft | 094 | 130603022 | 1 | — | Spring Pin 3X22 |
| 038 | 420576N00 | 1 | 1 | Upper Cap | 110 | 420571H10 | 1 | 1 | Wheel Ring Washer |
| 039 | 420576G10 | 1 | 1 | Bearing Nut | 111 | 420571G90 | 1 | 1 | Wheel Ring Washer (Cutter) |
| 040 | 420577171 | 1 | 1 | Wheel Ring | Accessories | 134004014 | 1 | 1 | Combination Open Ended Spanner 14X19 |
| 041 | 420576300 | 1 | 1 | Muffler A | Accessories | 134001006 | 1 | 1 | Hexagonal Wrench HEX 6 |
| 042 | 420576310 | 1 | 1 | Muffler B | Accessories | 137521004 | 1 | 1 | Oil |
| 043 | 131908035 | 1 | 1 | Hex.Socket Button Screw M8X35 | NPT TYPE | | | | |
| 045 | 420577H51 | 1 | 1 | Wheel Carrier | 001 | 420576580 | — | 1 | Throttle Valve Cover (NPT) |